

Convert 2 - 90 degree ells to 180 degree returns

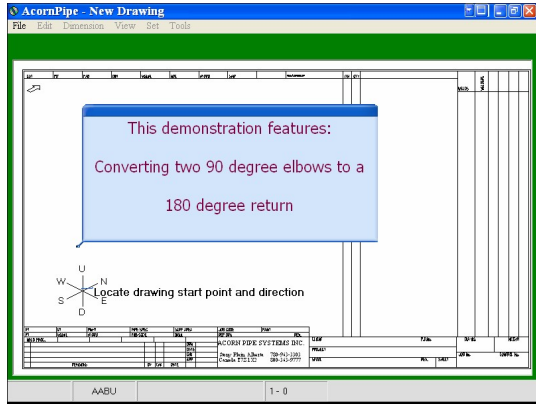


Fig 1 - This demonstration features: Converting two 90 degree elbows to a 180 degree return

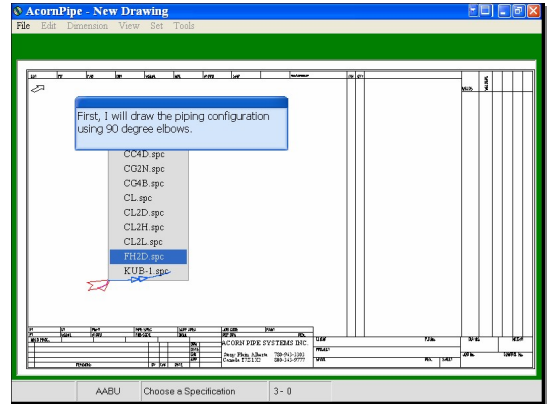


Fig 2 - First, I will draw the piping configuration using 90 degree elbows.

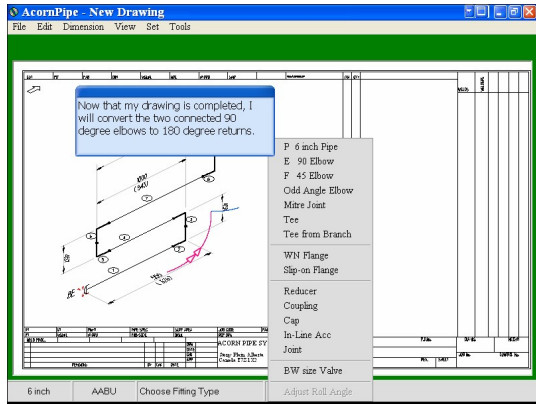


Fig 3 - Now that my drawing is completed, I will convert the two connected 90 degree elbows to 180 degree returns.

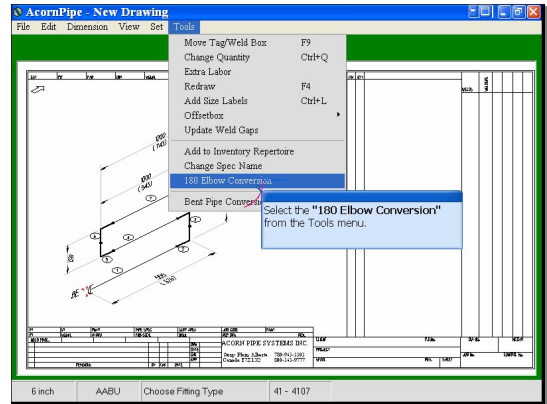


Fig 4 - Select the "180 Elbow Conversion" from the Tools menu.

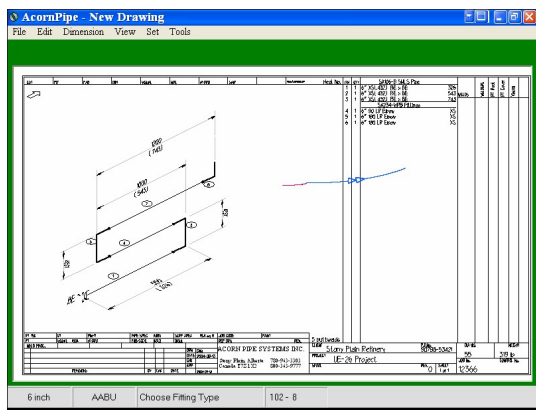


Fig 5

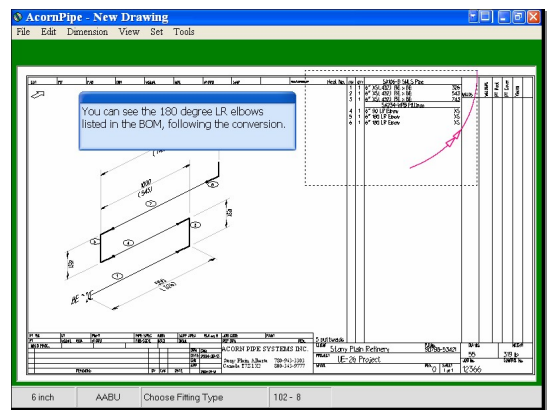


Fig 6 - You can see the 180 degree LR elbows listed in the BOM, following the conversion.

Heat No.	ITEM	QTY	Description	Spec	Notes
1	1	1	6" XS(.432) BE x BE	326	
2	1	1	6" XS(.432) BE x BE	543	WELDS
3	1	1	6" XS(.432) BE x BE	743	
SA234-WPB Fittings					
4	1	1	6" 90 LR Elbow	XS	
5	1	1	6" 180 LR Elbow	XS	
6	1	1	6" 180 LR Elbow	XS	

Fig 7

Heat No.	ITEM	QTY	Description	Spec	Notes
1	1	1	6" XS(.432) BE x BE	326	
2	1	1	6" XS(.432) BE x BE	543	WELDS
3	1	1	6" XS(.432) BE x BE	743	
SA234-WPB Fittings					
4	1	1	6" 90 LR Elbow	XS	
5	1	1	6" 180 LR Elbow	XS	
6	1	1	6" 180 LR Elbow	XS	

Fig 8 - You can see the 180 degree LR elbows listed in the BCM, following the conversion.

Heat No.	ITEM	QTY	Description	Spec	Notes
1	1	1	6" XS(.432) BE x BE	326	
2	1	1	6" XS(.432) BE x BE	543	WELDS
3	1	1	6" XS(.432) BE x BE	743	
SA234-WPB Fittings					
4	1	1	6" 90 LR Elbow	XS	
5	1	1	6" 180 LR Elbow	XS	
6	1	1	6" 180 LR Elbow	XS	

Fig 9 - The End