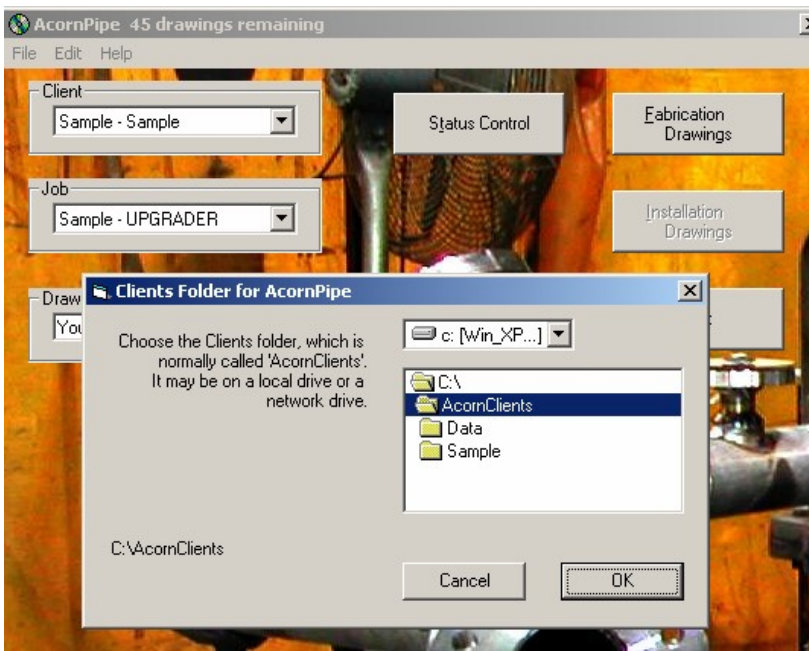


# Networking AcornPipe Software

Install the AcornPipe software to each of the computer terminals on the network. Then copy the “C:\AcornClients” folder to your network drive.

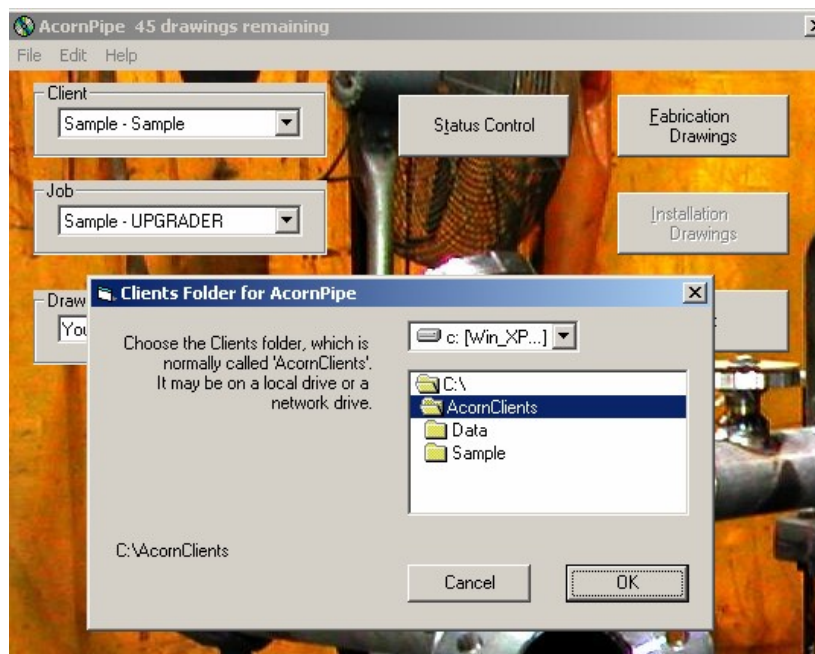
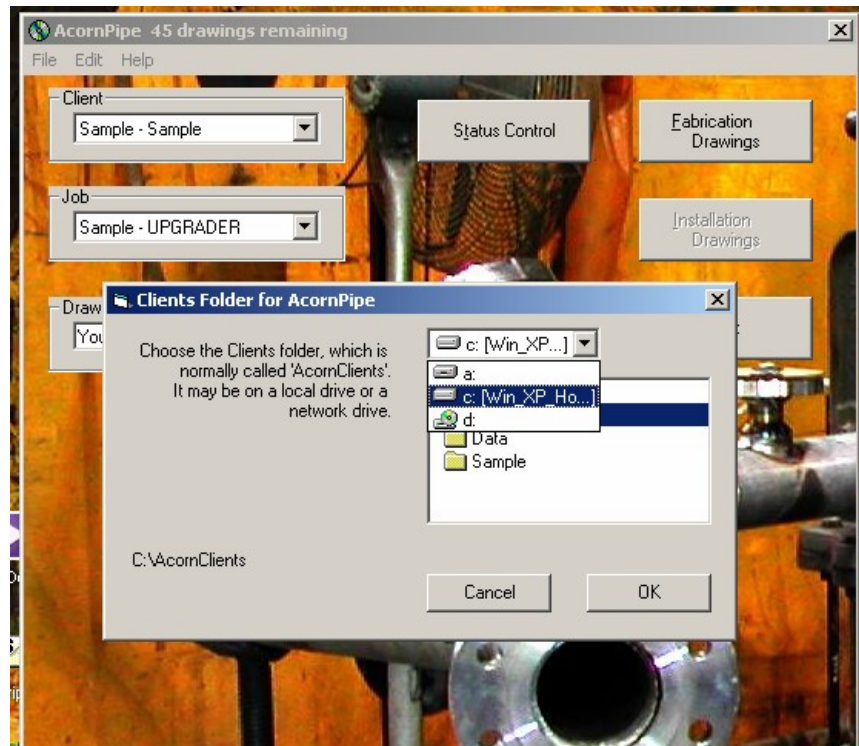
From inside of the AcornPipe program select File, then “Set Clients Folder” as demonstrated below.

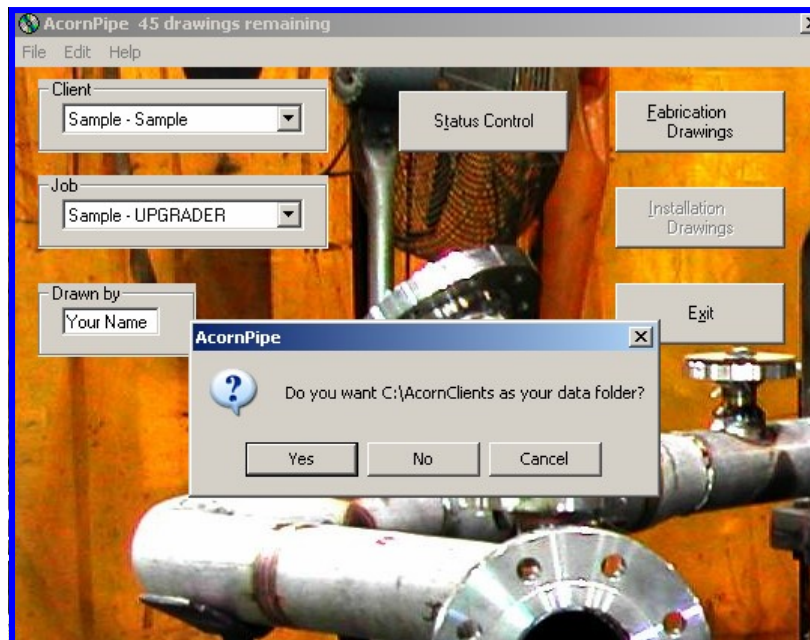


Double Click your way to the network drive, select the drive by double clicking on it, then select “AcornClients by double clicking.

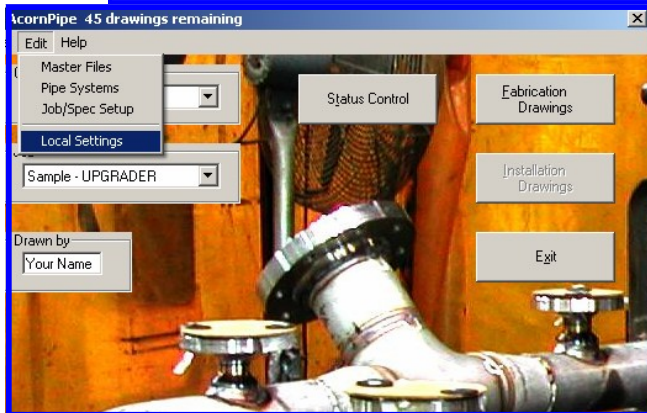
Below: Selecting the drive:

Double Click your way to the network drive, and select the drive by double clicking on it, then select “AcornClients by double clicking.





Above: Choose “Yes” to set “Acorn Clients as the data folder.  
 Next, backspace the current entry, and type your name into the space for your name.



Next select “Edit”, then choose “Local Settings” from the menu.  
 Click “Done” to set your name in the program.  
 The “Local Settings folder is also used to choose the screen and printer resolution.  
 The preset printer values are usually good for laser printers. You may need to reset them for Ink jets and desk jets.

