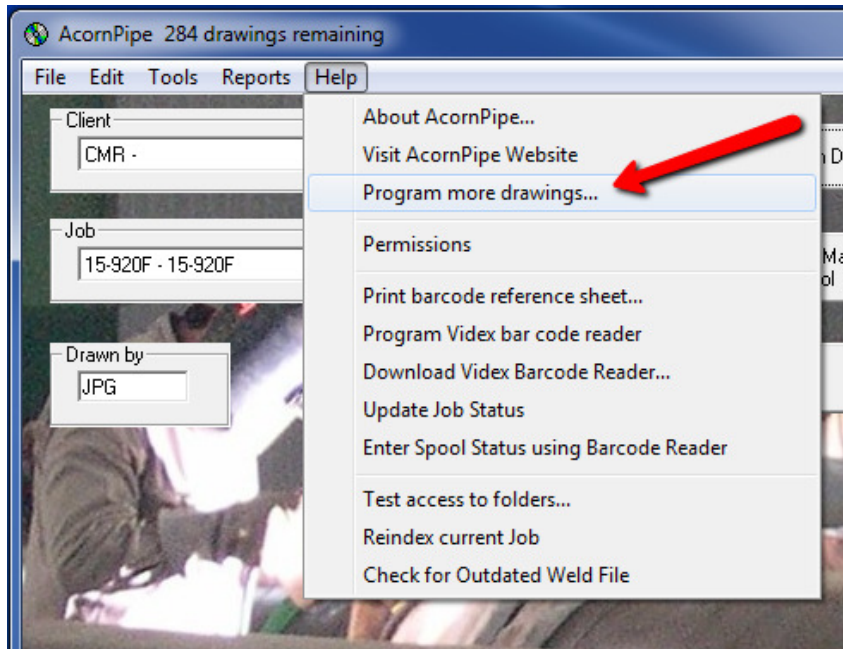


AcornPipe - How to Order More Drawings

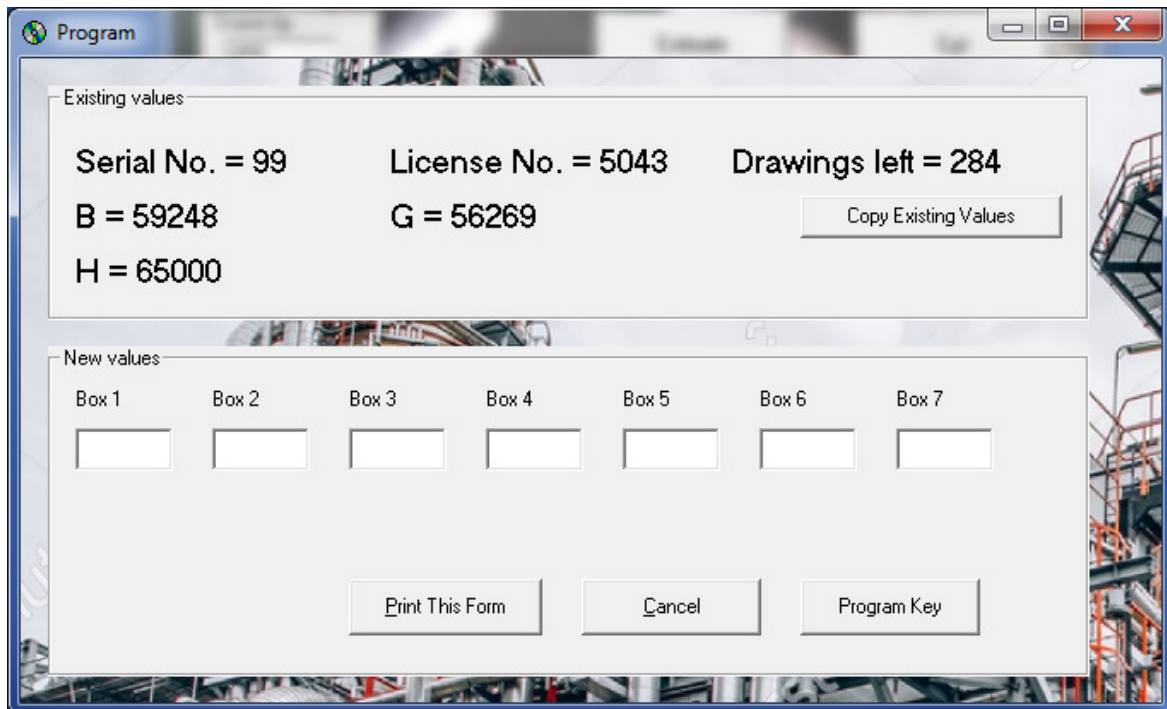
AcornPipe is normally supplied with 100 drawing counts already programmed into the key. You can practice drawing with as little as one drawing count left in the key, provided you do not save any drawings.

You can minimize the number of counts consumed during practice by opening an existing drawing and modifying it, rather than starting a new drawing each time.

To order more drawings, select Help/Program more drawings as shown.



The Program window appears:



This window contains the information needed to allow Acorn Pipe Systems Inc. to issue more drawings for your key. Press Alt-PrintScreen to copy the window. Then paste the window into an email to joanne@acornpipe.com and specify how many drawings you are ordering. If you have questions on ordering or need to provide credit card information, you can call Joanne at 1-800-363-9777.

When drawings are issued, you will be provided with codes to enter into the boxes on the Program form as shown below. The codes you receive will look something like this:

E770 2F0D 4866 A3D5 4AE3 DACD D66E

The screenshot shows a window titled "Program" with a background image of an industrial facility. It is divided into two main sections: "Existing values" and "New values".

Existing values:

- Serial No. = 99
- License No. = 5043
- Drawings left = 284
- B = 59248
- G = 56269
- H = 65000

A "Copy Existing Values" button is located to the right of the existing values.

New values:

Seven input boxes are arranged horizontally, labeled "Box 1" through "Box 7". Each box contains a code:

- Box 1: E770
- Box 2: 2F0D
- Box 3: 4866
- Box 4: A3D5
- Box 5: 4AE2
- Box 6: DACD
- Box 7: D66E

A red arrow points from a red-bordered text box to the first box (E770). The text box contains the following text:

Shortcut: If you paste all the characters here, all seven boxes will usually populate.

A "Program Key" button is located at the bottom right of the "New values" section.

After entering or pasting the codes, select Program Key. You will need to exit AcornPipe and relaunch it to use the new drawing counts.