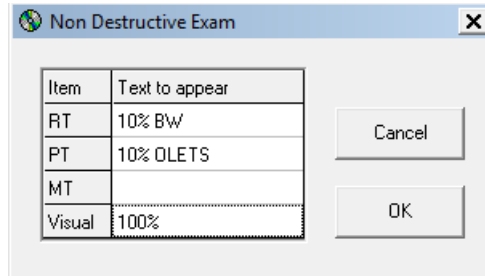
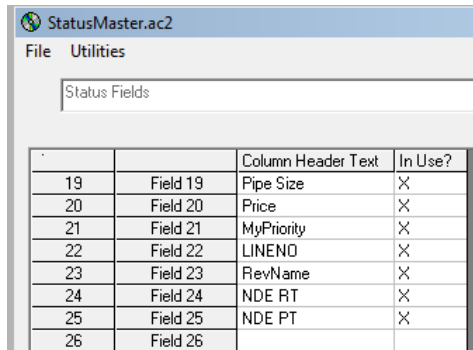


Putting Inspection Requirements in the Status Table

As of AcornPipe version 8-689, you can use a status header to write the spec's inspection requirements to the status table. For example, suppose the inspection headers in the layout are RT, PT, MT, and Visual, as shown in the window below:



Based on the Item column in this window, NDE RT, NDE PT, NDE MT, and NDE Visual become available as status headers. Suppose we go to Edit/Master Files/Fabrication Status Headers and add entries for NDE RT and NDE PT as shown below left. When a drawing is saved or resaved, the entries from the Text to Appear column above are written to the status table, below right.



NDE RT	NDE PT
10% BW	10% OLETS
10% BW	10% OLETS
10% BW	10% OLETS
10% BW	10% OLETS
10% BW	10% OLETS

Note that the inspection headers are simply reproduced as text; they do not influence the program's choice of welding lot numbers, for example.

For more information on how to quickly assign weld lot numbers, see [Weld Lot Numbers.pdf](#).