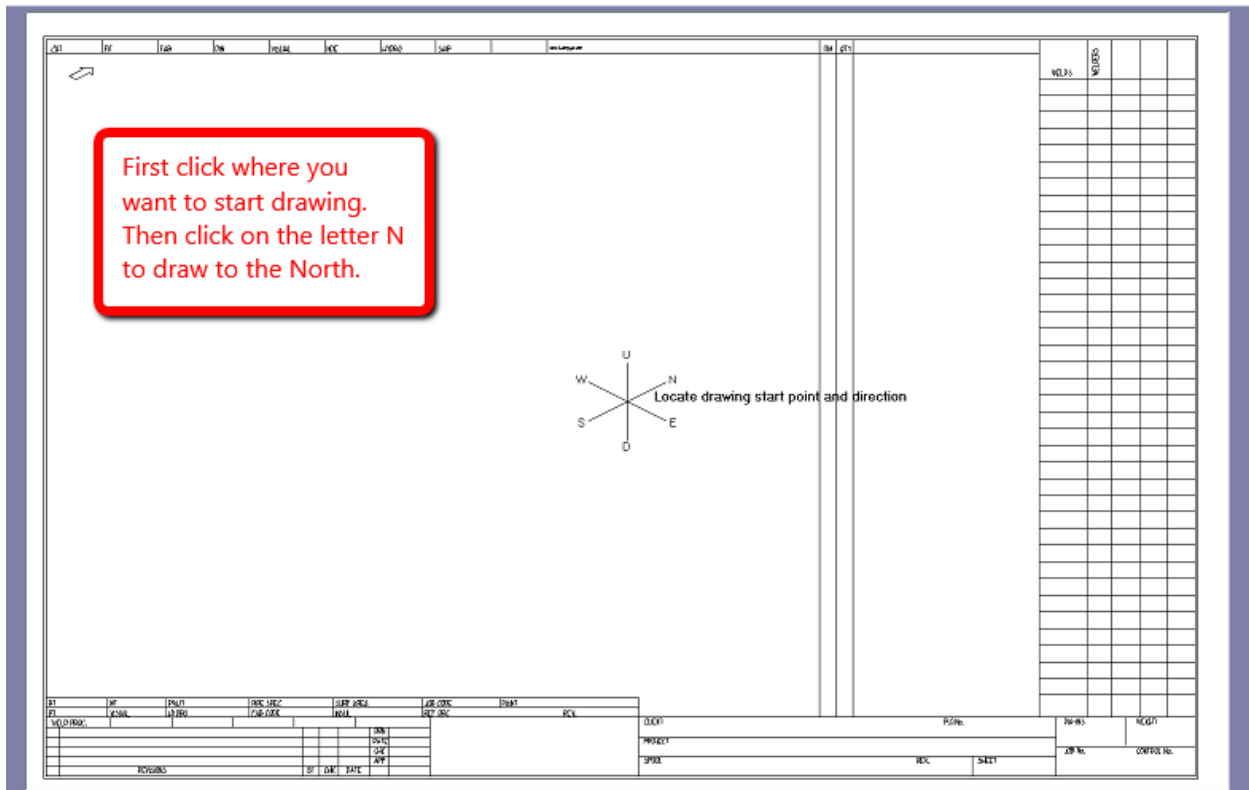


Quick Start to Drawing in AcornPipe

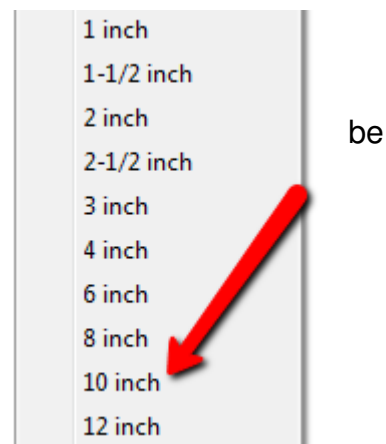
This section shows how to draw pipe, BW elbows, reducing tees, and a weld neck flange. It also shows how to toggle a flange image, reposition an item tag, and delete the last item drawn.

When you first start to draw a piping spool in AcornPipe, you are faced with a blank drawing with a kind of “star” in the middle. The letters around the star are U,N,E,D,S,W, for Up, North, East, Down, South, and West. Click once wherever you want to start to draw. The star will move to that location. Then click on one of the direction letters to start drawing in that direction.

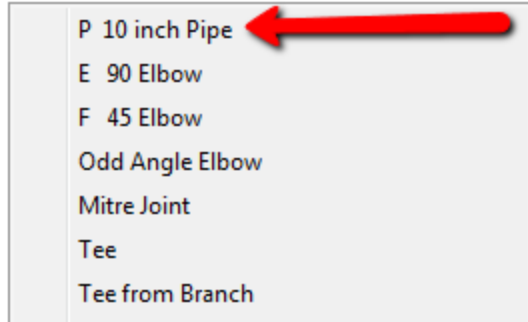


If there is more than one spec, you will be prompted to choose which spec you want to draw with. Then you will be prompted for a starting size.

Choose the 10 inch size.



Let's start by drawing a 10-inch pipe:



Start the 10 inch pipe with a bevel end.

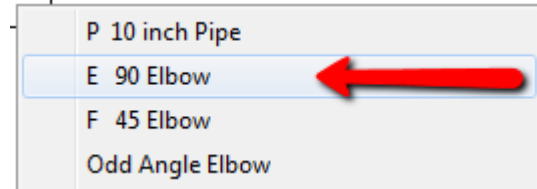


The next click places the item tag, and the final click ends the pipe:



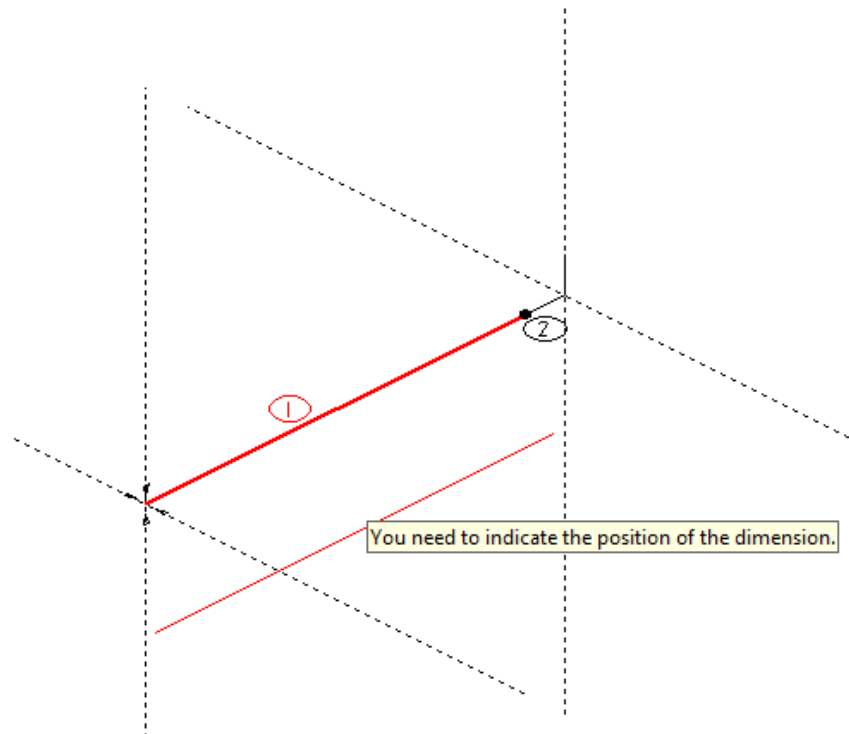
Draw a 90° Long Radius Elbow:

Click on the end of the pipe and select 90 Elbow.



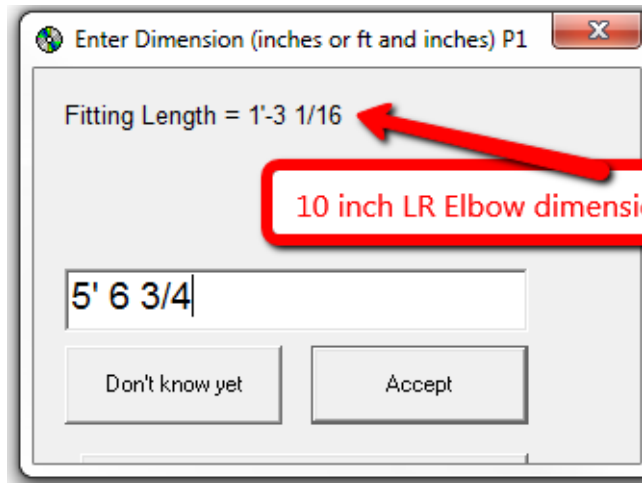
You may need to choose LR Elbows if the spec has more than one elbow choice switched on. Click the right mouse button or press the spacebar as required to rotate the elbow until it points up. Press ENTER or the left mouse button to accept the direction and complete the elbow.

Indicate your preferred position for the dimension by clicking near one of the dotted lines.

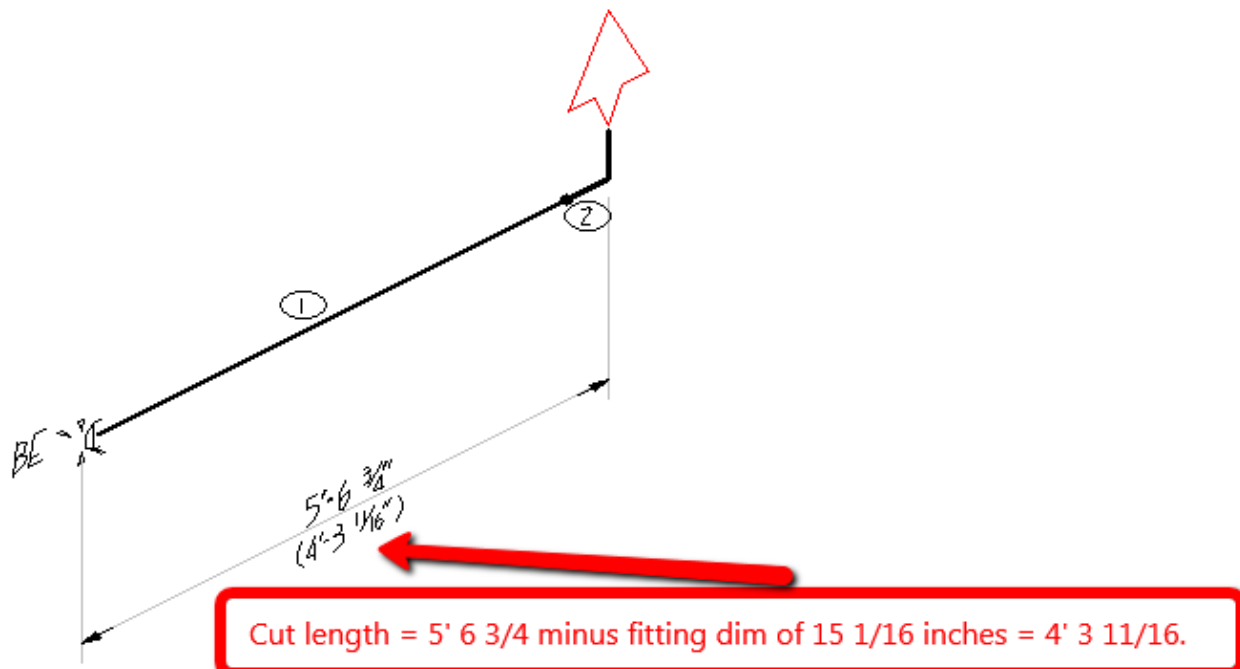


Enter the Dimension

Enter 5' 6 3/4 inches as shown below. The displayed fitting length is the sum of the 10 inch LR Elbow dimension plus the weld gap for 10 inch size, which for this spec is 1/16 inch.

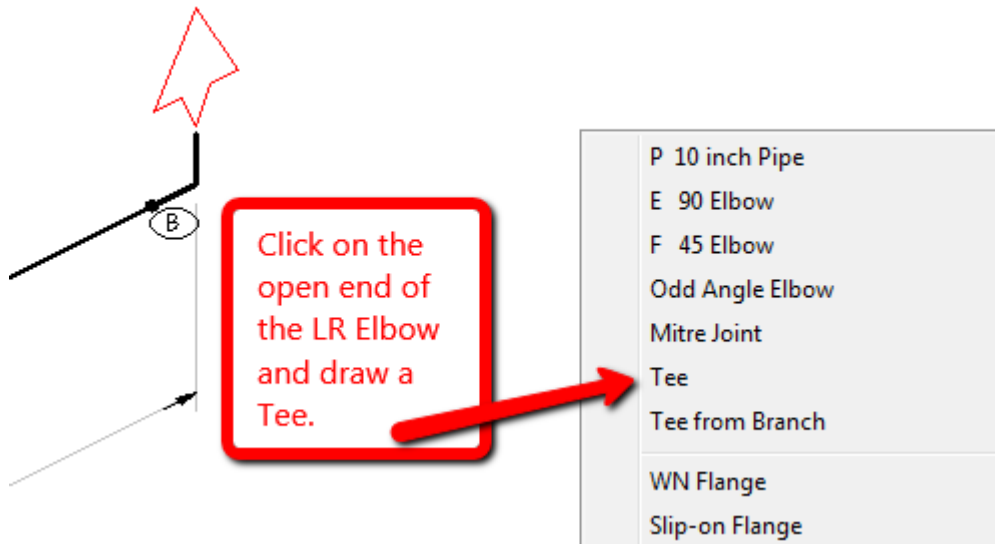


The overall dimension of 5 ft 6 3/4 inches is displayed, with the pipe cut length shown underneath in parentheses.

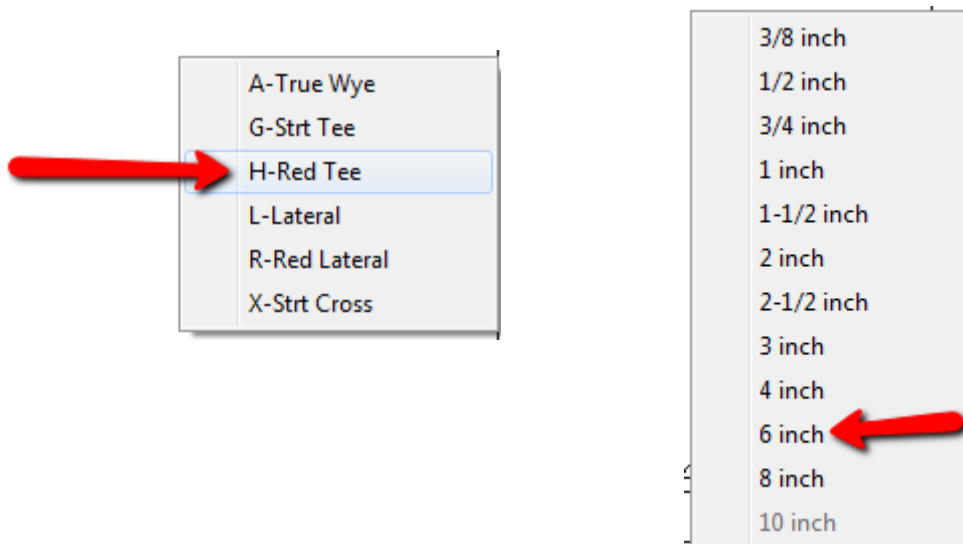


Draw a Reducing Tee:

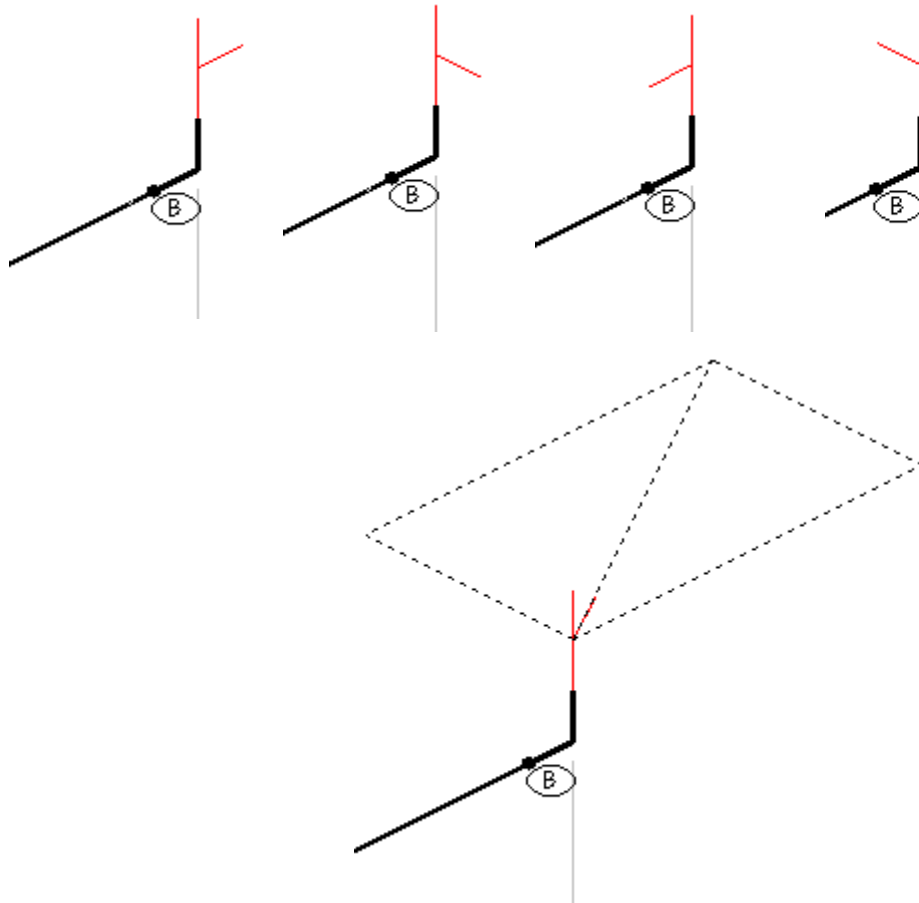
Click on the open end of the LR Elbow and select Tee:



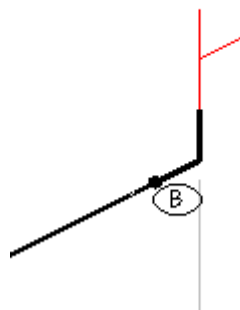
Select Red Tee and make the branch size 6 inch:



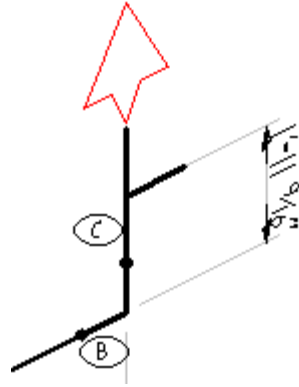
Press the right mouse button or the spacebar to change the branch direction:.



Point the branch North as shown. Accept this direction with left click or Enter.

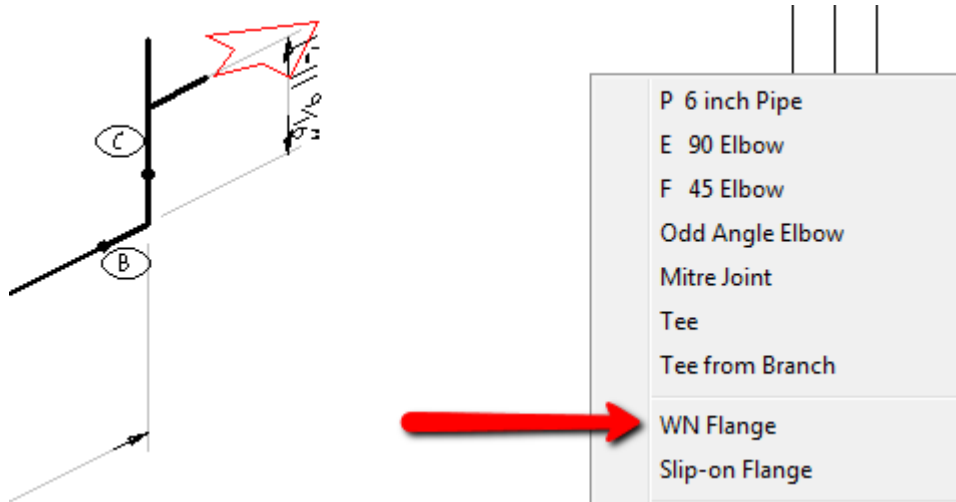


Place the fitting-to-fitting dimension as shown. The dimension of 1' 11 9/16 is calculated for you based on the fitting dimensions plus weld gap, if any.

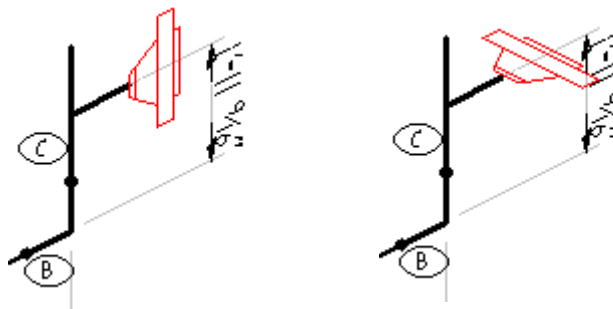


Add a Weld Neck Flange to the Branch of the Tee:

Click on the branch of the tee and select WN Flange.

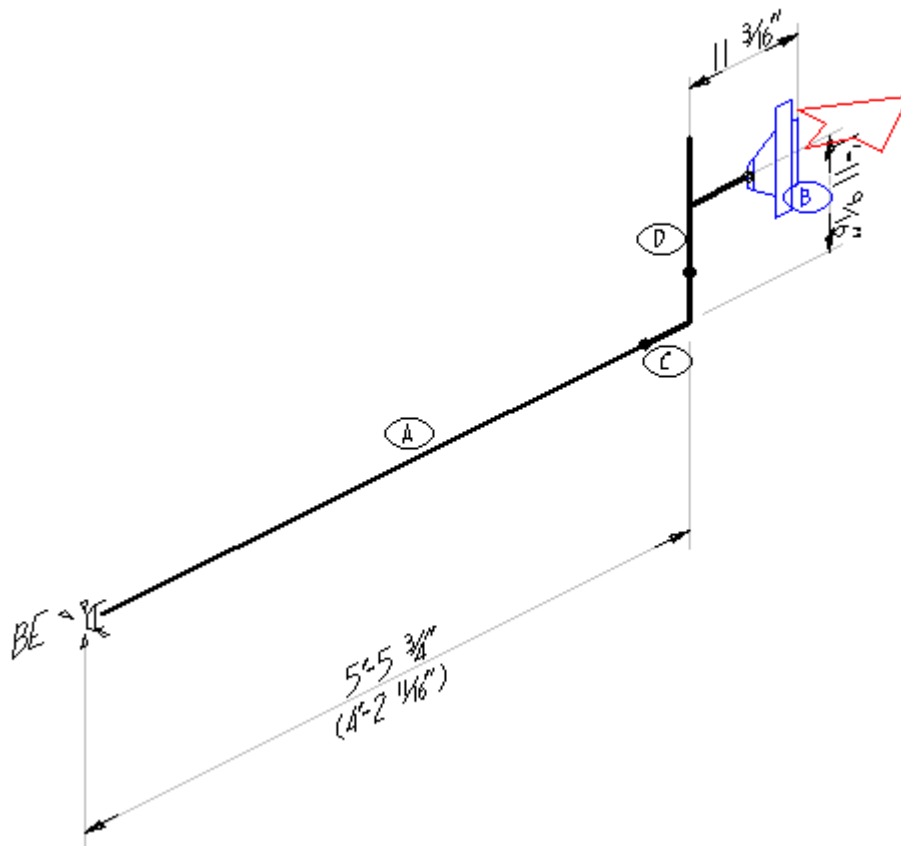


The WN Flange appears. Click the right mouse button or press spacebar to toggle between alternate images. Press the up or down arrow if you feel the image needs to be larger or smaller. Then click the left mouse button or press ENTER to complete the flange.



Switch to a different fitting image by using Select Mode

If you finish drawing the flange and then decide that it is not using your preferred image, you can switch the image as follows. First, get into select mode by pressing F11. This is quicker than selecting Edit, Select Pipe/Fittings. The cursor changes to denote select mode. Click on the item tag for the flange. The flange and its tag will turn blue. Press the spacebar to toggle the image as shown below, then press Enter to accept.



Reposition an Item Tag

To reposition tag B, get into tag adjustment mode by pressing F9. The cursor changes to denote tag adjustment mode. Click on tag B and drag it to a better location. As you do so, a black circle indicates which item corresponds to the tag and also displays its description.

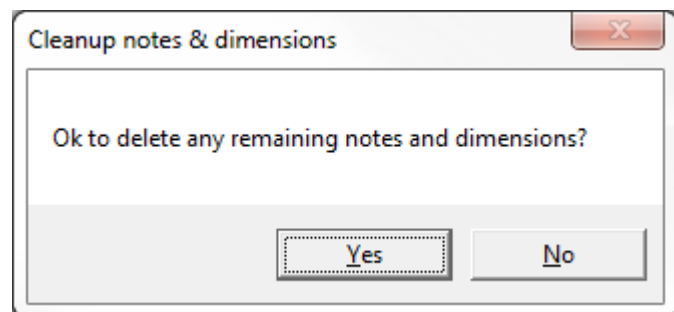
Bill of Materials

Note that the bill of materials is updated automatically as you draw. You may need to press F4 to make it include the latest item.

Heat#	nm	QTY	A106-B SMLS Pipe						
	A	1	10" Std.(365) BE x BE	4'-2 1/16"					
			A105 Flanges						
	B	1	6" 150# RF Weld Neck	Std					
			A234-WPB Fittings						
	C	1	10" 90 LR Elbow	Std					
	D	1	10" x 6" Red Tee	Std					

Delete the Last Item Drawn

If necessary, press ESC to get back to drawing mode. Then press Ctrl-X to delete the flange. Pressing Ctrl-X again will delete the tee, the elbow, and the pipe. If you delete the one remaining item, you will be given the option of deleting any remaining notes and dimensions.



Keystrokes Introduced in This Section

- | | |
|----------|---|
| F11 | Get into Select mode |
| Spacebar | Toggle fitting images when in select mode. Also used when drawing to change the direction of an elbow or the branch of a tee. |
| ENTER | Finish the item currently being drawn |
| F9 | Get into Tag drag mode |
| ESC | Get back into drawing mode |
| Ctrl-X | Delete the last item drawn. Can be used repeatedly. |