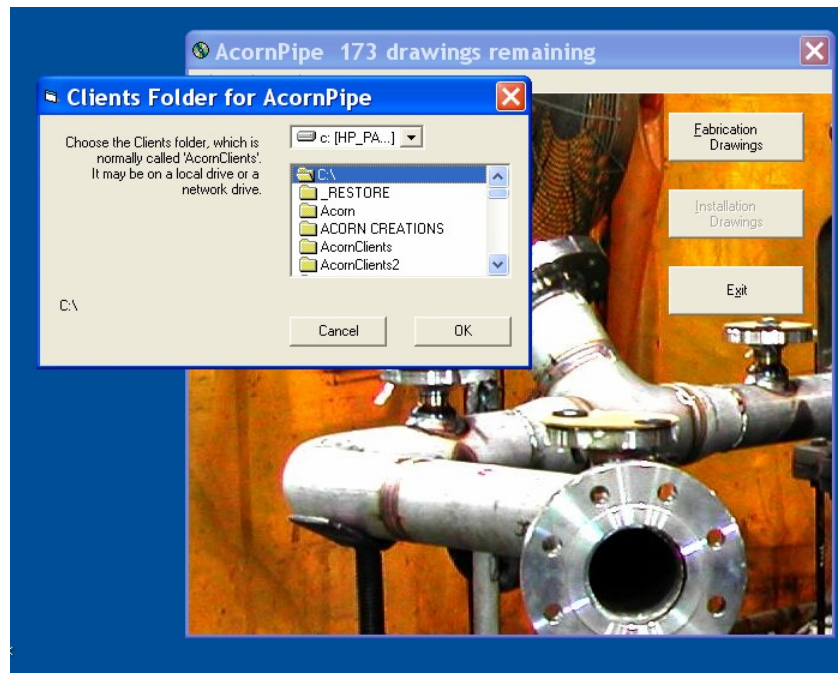


Reselect the Data Folder after installing the Software.

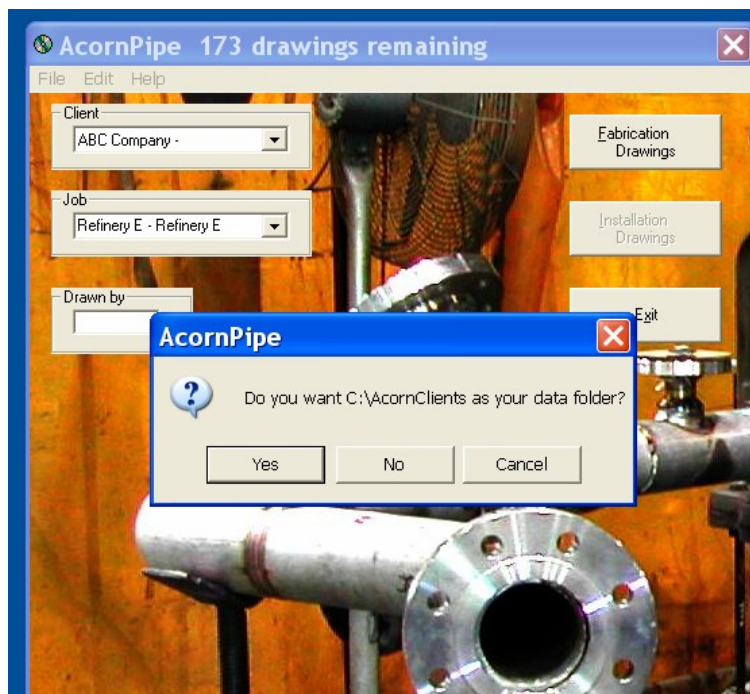


1. Reset the Data Folder by Clicking on FILE, then SET DATA FOLDER.
2. Double Click on the "C" Drive.





3. Double Click on the ACORN CLIENTS FOLDER
4. Click on “YES” to set Acorn Clients as your Data Folder.



Reset the Spec.

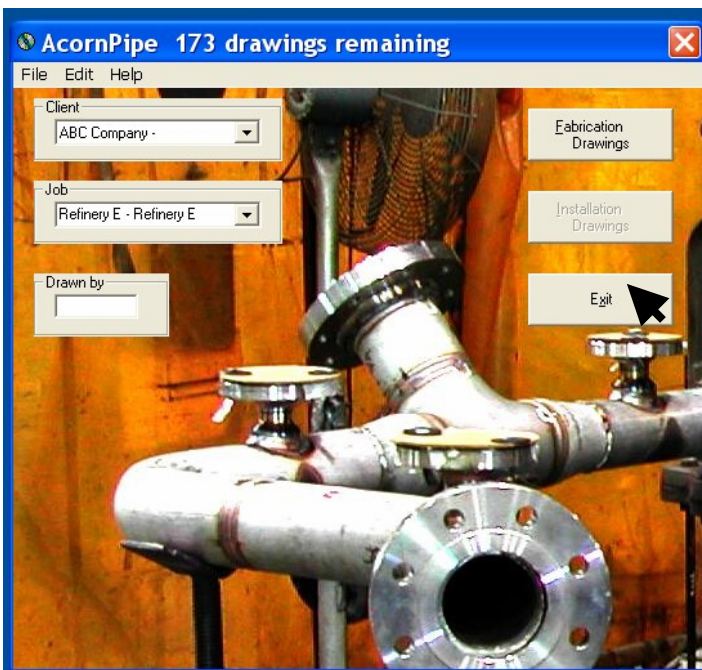
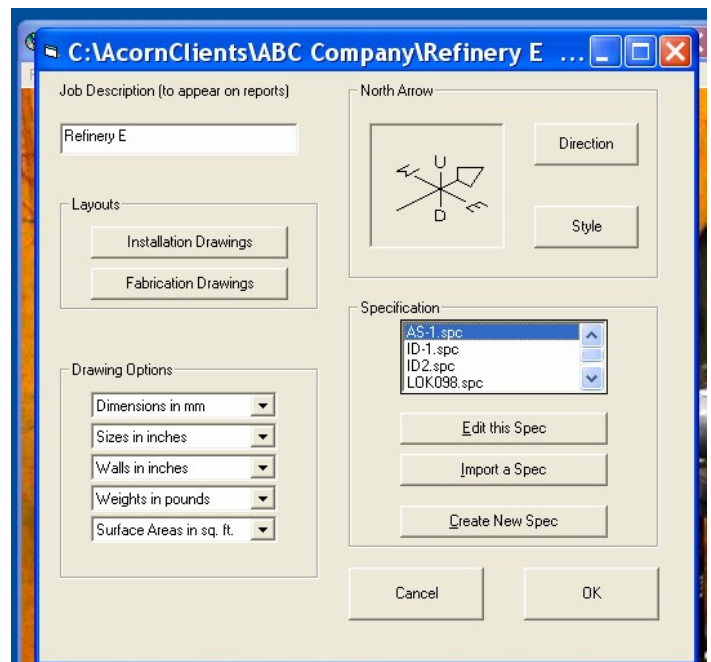


Above: Select EDIT, Then Job/Spec Setup.

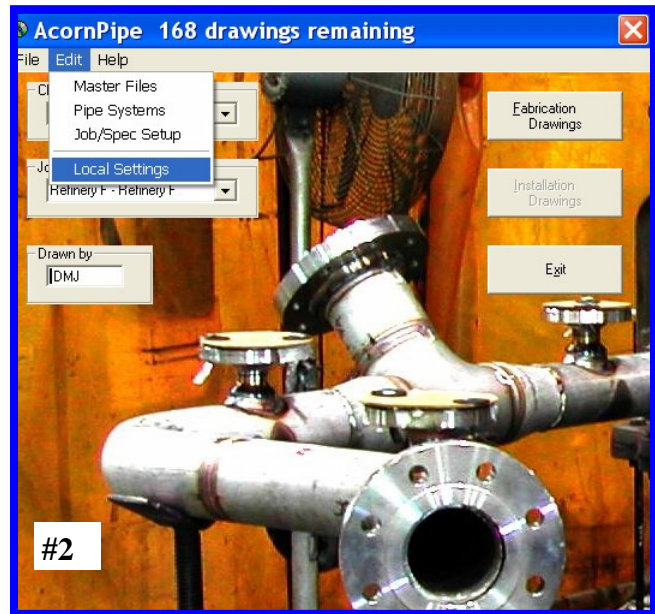
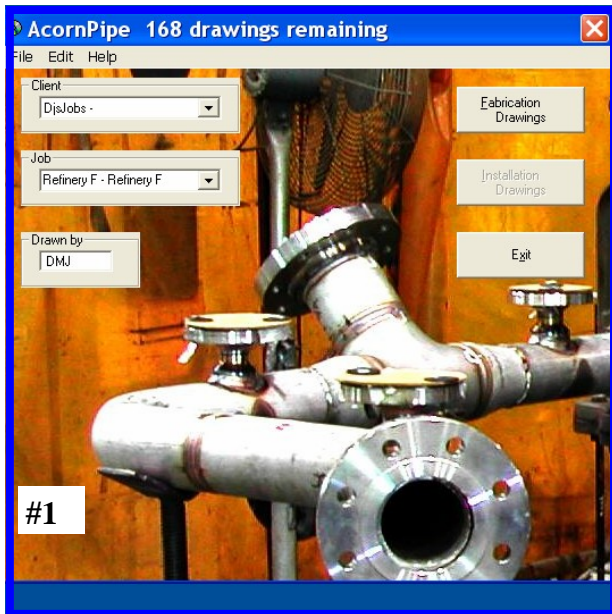
Right: Select a spec, to reset it.

Below, now EXIT the program. When you re-enter the program, you will be able to access the "Fabrication Drawing" part of the program.

You will need to reselect the Data Folder and Spec, each time you install the update.



Insert Your Initials or Name, then Update the “Local Settings”



The user initials or name is important in the newest version of AcornPipe Software.

Insert Your Initials or Name, then Update the “Local Settings” by following the images from #1 through #4. Entering the Local Settings, then exiting again is sufficient to reset the user name.

Remember to exit and then re-enter AcornPipe when you are finished.

